

2021

# *Fabric Blinds*

H O R I Z O N T A L   F A B R I C   B L I N D S



PRODUCT GUIDE

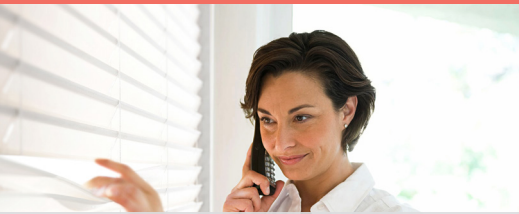




## TABLE OF CONTENTS

FEATURES AND LIFT SYSTEMS	3
FABRIC COLORS AVAILABLE	4-5
CLOTH TAPE COLOR COORDINATION CHART	6
PRODUCT SPECIFICATIONS	7
CHILD SAFETY INFORMATION	8
VALANCE OPTIONS	9
MOTORIZATION OPTIONS	10
PRODUCT DIAGRAMS	11-15
PRICING GRIDS - MSRP	16-19
MEASURING	20-22
IMPORTANT ORDERING INFORMATION	23
ORDER FORMS	24-25
MANUFACTURES TERMS AND CONDITIONS	26
WARRANTY	27

# FEATURES AND LIFT SYSTEMS



Enjoy the look and feel of fabric with the functionality of typical blinds.



Made of durable polyester fabric with a patented finishing coat that repels dust and liquids, ideal for high humidity areas.



Fabric blinds provide effective sound dampening features, light filtration, and UV Light Blockage

Lightweight makes them easy to install and operate.  
Impressive color palette and patterns available.  
Cleaning and care is simple with just a light duster.

## Standard Blind Features

- High Profile Headrail
- Regular Pull Cord & Cord Tilt Controls
- Safety Breakaway Tassel
- Standard 2¾" Dover (PVC) Valance / Fabric Insert
- Optional 3⅜" Westminster (Wood) Valance

## EZ Lift Blind Features

- ⅜" Tape Color Coordination Chart
- High Profile Headrail
- Continuous Cord-Loop
- Standard 2¾" Dover (PVC) Valance / Fabric Insert
- Optional 3⅜" Westminster (Wood) Valance

## Aurora (Routeless Blind) Features

- Low Profile Headrail
- Regular Pull Cord & Cord Tilt Controls
- Safety Breakaway Tassel
- Standard 2¾" Dover (PVC) Valance / Fabric Insert
- Optional 3⅜" Westminster (Wood) Valance

## Cordless Blind Features

- Low Profile Headrail
- Tilt: Cord or Wand
- Standard 2¾" Dover (PVC) Valance / Fabric Insert
- Optional 3⅜" Westminster (Wood) Valance

## Size Considerations for all Blinds

Minimum Blind Width	
Cordless	19" Wand Tilt   19" Cord Tilt
EZ Lift	9"
Aurora / Routeless / Standard	9.5"
Maximum Single Blind Width	96" oversizes up to 107" (Special Quote)
Maximum Width: Multiple Blinds on One Headrail	96" oversizes up to 107" (Special Quote)
Minimum Blind Height	18"
Maximum Blind Height	120"



# COLORS SOLID, WOOD AND DUO TONES

50mm = 2" SLATS | 65mm = 2.5" SLATS

D = ROOM DARKENING SLATS - COLOR SUFFIX

2" SOLID TONE



WHITE  
50100 / 50100D



OFF WHITE  
50113 / 50113D



VANILLA  
50125 / 50125D



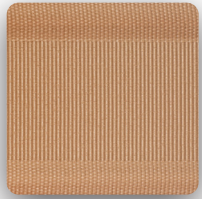
PEACH  
50206



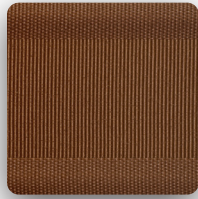
GREY  
50823



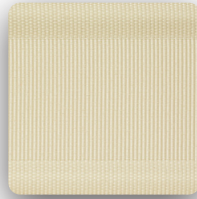
PROVIDENCE BLUE  
50627



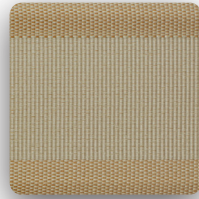
PRALINE  
50357



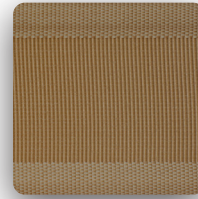
PECAN  
50334 / 50334D



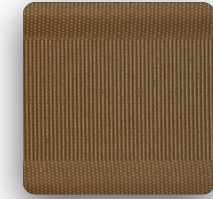
SAND  
50031 / 50031D



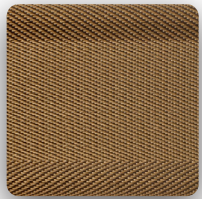
SESAME  
50302 / 50302D



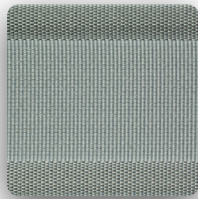
OAK  
50446



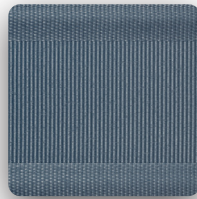
TEAK  
50370 / 50370D



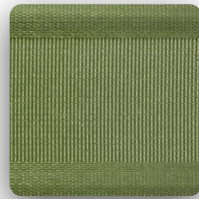
CHESTNUT  
50017 / 50017D



SLATE  
50016 / 50016D



BLUEBERRY  
50029 / 50029D



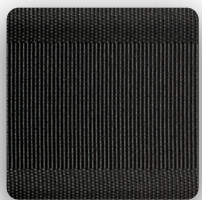
MOSS  
50504



COUNTRY REDWOOD  
50295 / 50295D



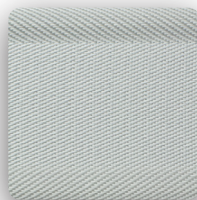
COCOA  
50378 / 50378D



BLACK  
50897



GOLD  
50320D

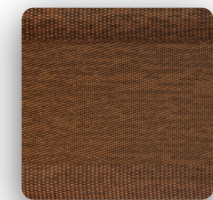


SILVER  
50822D

2" WOOD TONE



MAPLE  
50430-1

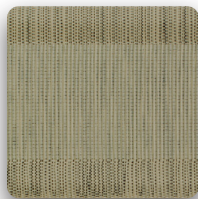


PECAN  
50334-1

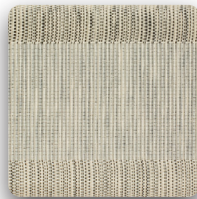
2" DUO TONE



BLUE ICE / BLACK  
50601J897



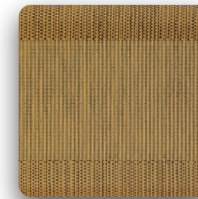
CANARY / BLACK  
50417J897



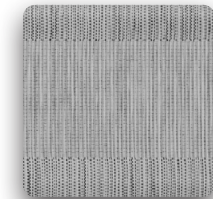
PEACH / BLACK  
50206J897



PRALINE / BLACK  
50357J897



WHEAT / BLACK  
50430J897



BLACK / WHITE  
50100J897

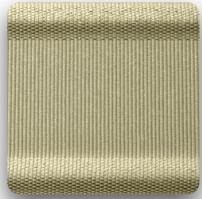


# COLORS METALLIC, ACID WASH, NOIR AND SOLID TONES

50mm = 2" SLATS | 65mm = 2.5" SLATS

D = ROOM DARKENING SLATS - COLOR SUFFIX

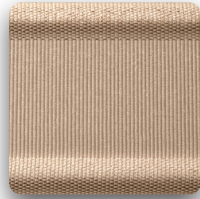
2" METALLIC TONE



LUXURY GOLD  
50902

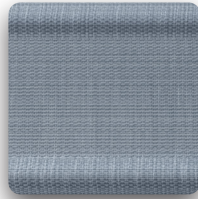


MOON SILVER  
50901

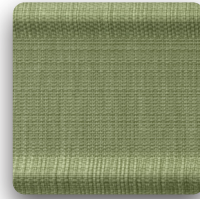


ROSE GOLD  
50903

2" ACID WASH TONE



DUSK BLUE  
50023



ASPEN GREEN  
50515



CRUSHED BERRY  
50349

2" NOIR TONE



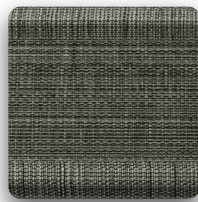
BELUGA  
50376



CUB  
50375



OLIVE  
50433



TURBULENCE  
50895

2.5" SOLID TONE



WHITE  
65100 / 65100D



OFF WHITE  
65113 / 65113D



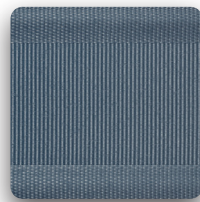
VANILLA  
65125 / 65125D



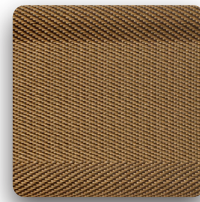
PEACH  
65206



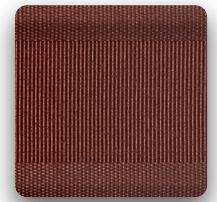
GREY  
65823



BLUEBERRY  
65029D



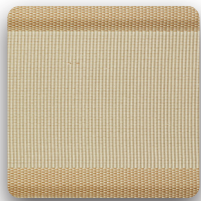
CHESTNUT  
65017D



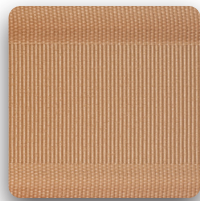
COUNTRY REDWOOD  
65295D



SAND  
65031 / 65031D



SESAME  
65302 / 65302D



PRALINE  
65357



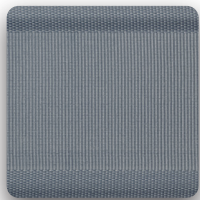
WILLOW  
65517



TEAK  
65370 / 65370D



PECAN  
65334 / 65334D



SURF  
65613



COCOA  
65378 / 65378D



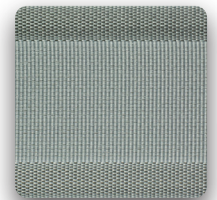
GOLD  
65320D



SILVER  
65822D






















BLACK  
65897



SLATE  
65016D








# CLOTH TAPE COLOR COORDINATION CHART

2" Solid Tone Slats				Light Filtering / Room Darkening
Slat Color Name	Color #	Suggested Cloth Tape Color		
White	50100 / D	B113	Winter White	
Winter White	50113 / D	B113	Winter White	
Vanilla	50125 / D	125	Linen	
Peach	50206	206	Blossom	
Grey	50823	B823	Granite	
Providence Blue	50627	B627	Waterfall	
Praline	50357	L357	Coral	
Pecan	50334 / D	B334	Sienna	
Sand	50031 / D	B322	Lemongrass	
Sesame	50302	B302	Stone	
	50302D	B302	Blush	
Oak	50446	B302	Blossom	
Teak	50370 / D	370	Teak	
Slate	50016 / D	B822	Slate	
Blueberry	50029 / D	B029	Blueberry	
Chestnut	50017 / D	370	Teak	
Country Redwood	50295 / D	295	Mahogany	
Moss	50504	B504	Pine	
Cocoa	50378 / D	B378	Java	
Black	50897	B897	Onyx	
Silver	50822D	B823	Granite	
Gold	50320D	B430	Caramel	
Cub	50375	370	Teak	
Turbulence	50895	B822-897	Slate-Onyx	
Beluga	50376	B822-897	Slate-Onyx	
Olive	50433	370	Teak	
Crushedberry	50349	295	Mahogany	
Aspen Green	50515	B504	Pine	
Dusk Blue	50023	B627	Waterfall	
Rose Gold	50903	206	Blossom	
Moon Silver	50901	B823	Granite	
Luxury Gold	50902	B322	Lemongrass	

2.5" Solid Tone Slats				Light Filtering
Slat Color Name	Color #	Suggested Cloth Tape Color		
White	65100	B113	Winter White	
Winter White	65113	B113	Winter White	
Vanilla	65125	125	Linen	
Peach	65206	206	Blossom	
Grey	65823	B823	Granite	
Sand	65031	125	Linen	
Praline	65357	L357	Coral	
Sesame	65302	206	Blossom	
Willow	65517	B504	Pine	
Teak	65370	370	Teak	
Pecan	65334	B334	Sienna	
Surf	65613	B627	Waterfall	
Cocoa	65378	B378	Java	
Black	65897	B897	Onyx	

All Cloth Tape Available for 2” & 2.5” Slats					
Cloth Tape Color Name			Cloth Tape Color Name		
B113	Winter White		B822	Slate	
125	Linen		B029	Blueberry	
206	Blossom		370	Teak	
B823	Granite		295	Mahogany	
B627	Waterfall		B504	Pine	
L357	Coral		B378	Java	
B334	Sienna		B897	Onyx	
B322	Lemongrass		B430	Caramel	
B302	Stone		B613	Marine Tile	
L97	Blush		B323	Maize	

2" Dual Tone Slats				Light Filtering
Slat Color Name	Color #	Suggested Cloth Tape Color		
Frost	50601J897	B613	Marine Tile	
Spring Shower	50100J897	B822	Slate	
Weathered	50206J897	L97	Blush	
Lantern	50417J897	B322	Lemongrass	
Harvest	50430J897	B323	Maize	
Copper	50357J897	L357	Coral	

2" Wood Tone Slats				Light Filtering
Slat Color Name	Color #	Suggested Cloth Tape Color		
Pecan	50334-1	B334	Sienna	
Maple	50430-1	B430	Caramel	



# PRODUCT SPECIFICATIONS

## Options

CORDLESS / EZ LIFT / AURORA (ROUTELESS) / STANDARD	
Specifications:	Options:
Cordless, Aurora (Routeless) Headrail Dimensions	2" W x 1.5" H
EZ Lift, Standard, Headrail Dimensions	2" W x 2"H
Bottom Rail Dimensions	2" Rectangular Oval
Valance - Dover (PVC)	2¾" Valance with Fabric Insert
Valance - Westminster (Wood)	3¾" Valance
Valance Returns	(OB) or by Request - No Charge
IB Mount Depth	1" Minimal

Horizontal Stacking Chart		
Blind Height	2" Blind Stack Height	2.5" Blind Stack Height
24"	4.0"	3.7"
36"	4.7"	4.3"
48"	5.4"	4.9"
60"	6.0"	5.4"
72"	6.8"	6.0"
84"	7.4"	6.6"
96"	8.1"	7.0"
108"	8.9"	7.6"
120"	9.5"	8.2"

INCLUDES HEADRAIL AND BOTTOM RAIL

Optional Charges:		NET SURCHARGE
Multiple Blinds on One Headrail	2 Blinds Per Headrail	\$ 25
Blind Cut Outs	Side Cuts	\$ 15
Blinds Under 15" In Width		\$ 15

Replacement Parts:	NET SURCHARGE	Replacement Parts:	NET SURCHARGE
2" Brackets	\$ 10 - Per Pair	Hold Down Brackets	\$ 8 - Per Pair
Center Support Bracket	\$ 3 - Each	Spacer Blocks	\$ 6 - Per Pair
Cord Tensioner	\$ 7.50 - Each	Valance Clips	\$ 3 - Each
Screws Per Pack of 4	\$ 3 - Per Pack	Restraining Kit	\$ 20 - Each
Dover Valance with Insert	\$ 3 - Per Foot	Westminster Valance	\$ 6 - Per Foot



# CHILD SAFETY INFORMATION

The Manufacturer has committed to join the Window Covering Manufacturers Association's new safety standards in the efforts to prevent accidents involving children and pets with accessible cords and by offering other product options that are child-safe custom window coverings.

Window Covering Manufacturers Association (WCMA) announced the industry's first third-party certification program designed to help consumers and retailers identify window covering products that are best suited for use in homes with young children.

To be part of the new Best for Kids program, products are submitted to a WCMA-recognized third party testing laboratory where the products are required to and must meet stringent criteria. Once the products meet these criteria, they are "Certified Best For Kids". The Manufacturer has a number of products "Certified Best For Kids".



That's why the window coverings industry uses warning tags, warning labels, and other methods to communicate the potential hazards of corded window coverings. The warning label shown below, for example, communicates the important message about cords being a potential strangulation hazard and suggests choosing cordless alternatives or products with inaccessible cords. Blinds and shades that are improperly installed or out of safety compliance can pose a potential strangulation hazard to young children. According to the U.S. Consumer Product Safety Commission, corded window coverings are among the top hidden hazards in American homes.

## The Manufacturer Is Committed to Child Safety regarding Window Coverings



**WARNING**  
**ADVERTENCIA**



**Window Blind Cord Can STRANGLE Your Child.**

Keep cords out of children's reach. Shorten cords to prevent reach.  
Move crib and furniture away - Children can climb furniture to reach cords.

**La cuerda de la persiana puede ESTRANGULAR a su niño.**

Mantenga las cuerdas fuera del alcance de los niños. Acorte las cuerdas para evitar el alcance.  
Mueva la cuna y los muebles - Los niños pueden subir los muebles para alcanzar las cuerdas.

To learn more about the Window Covering Safety Council's efforts to protect children from potential cord hazards, visit their site at <https://windowcoverings.org>.

# VALANCE OPTIONS

(picture used for visual purpose only, profile and color may differ)



THE WESTMINSTER VALANCE

Wood Valance/Bottom-Rail Options

BW1124  
Blanco

BW2910  
Bone

BW206  
Smoky Grey

BW1107  
Slat Natural

BW1109  
Sugar Maple

BW1112  
Mink

BW202  
Cherry Wood

BW1121  
Toasted Walnut

BW205  
Dark Mahogany

BW1125  
Kona

\*DOVER VALANCE IS THE STANDARD OPTION WITH YOUR ORDER. THE STANDARD ORDER COLOR FOR THE DOVER VALANCE IS PV100 BRIGHT WHITE UNLESS ORDERED DIFFERENTLY.

THE DOVER VALANCE

PV100  
Blanco

PV125  
Cream

PV031  
Sand

PV320  
Camel

PV016  
Ash

PV378  
Mocha



PVC Valance Options



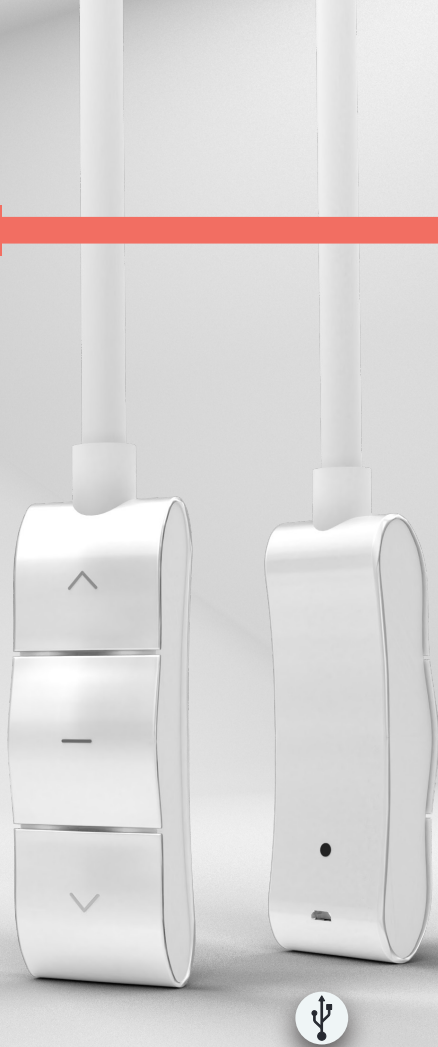
# MOTORIZATION OPTIONS

## TECHNOLOGY *THAT ENHANCES YOUR LIVING SPACE*

### RECHARGEABLE MOTORIZED / CONTROL WAND

- Easy Installation with no Hard Wiring
- Long Lasting Lithium Ion Battery
- Simple UP/DOWN/STOP Control Buttons
- Micro USB for Charging the Battery

WANDS	MSRP COST
Replacement Wand	\$166
CHARGING BRICK / USB CABLE	
Charging Brick	\$28
Micro USB Cable - 6'	\$34
Micro USB Cable - 10'	\$57



### REMOTE CONTROL - OPTIONAL

- Radio Remote
- Control your Product with a Single Channel or Multi-Channel Remote from up to 100 Feet *up to 20 shades per channel.*
- Remote Attaches to the Backplate Via Magnets, Just Attach the Backplate in a Convenient Place
- No Pull Cords Mean This is the Best Product for Child and Pet Safety
- Modern and Sleek Design Fits All Types of Decor

REMOTE	MSRP SURCHARGE
Single Channel	\$120
Multi-Channel	\$150

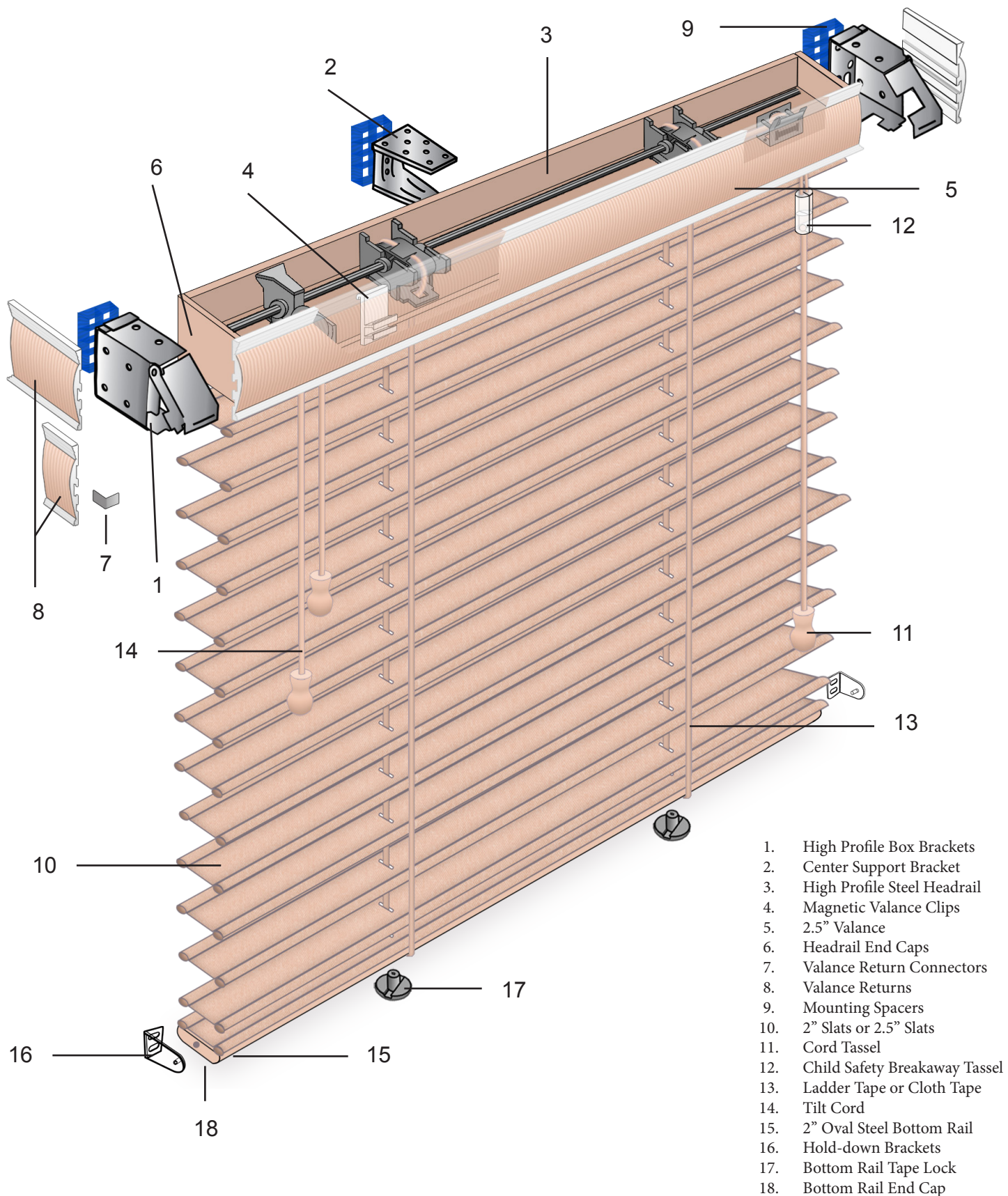


Multi-Channel



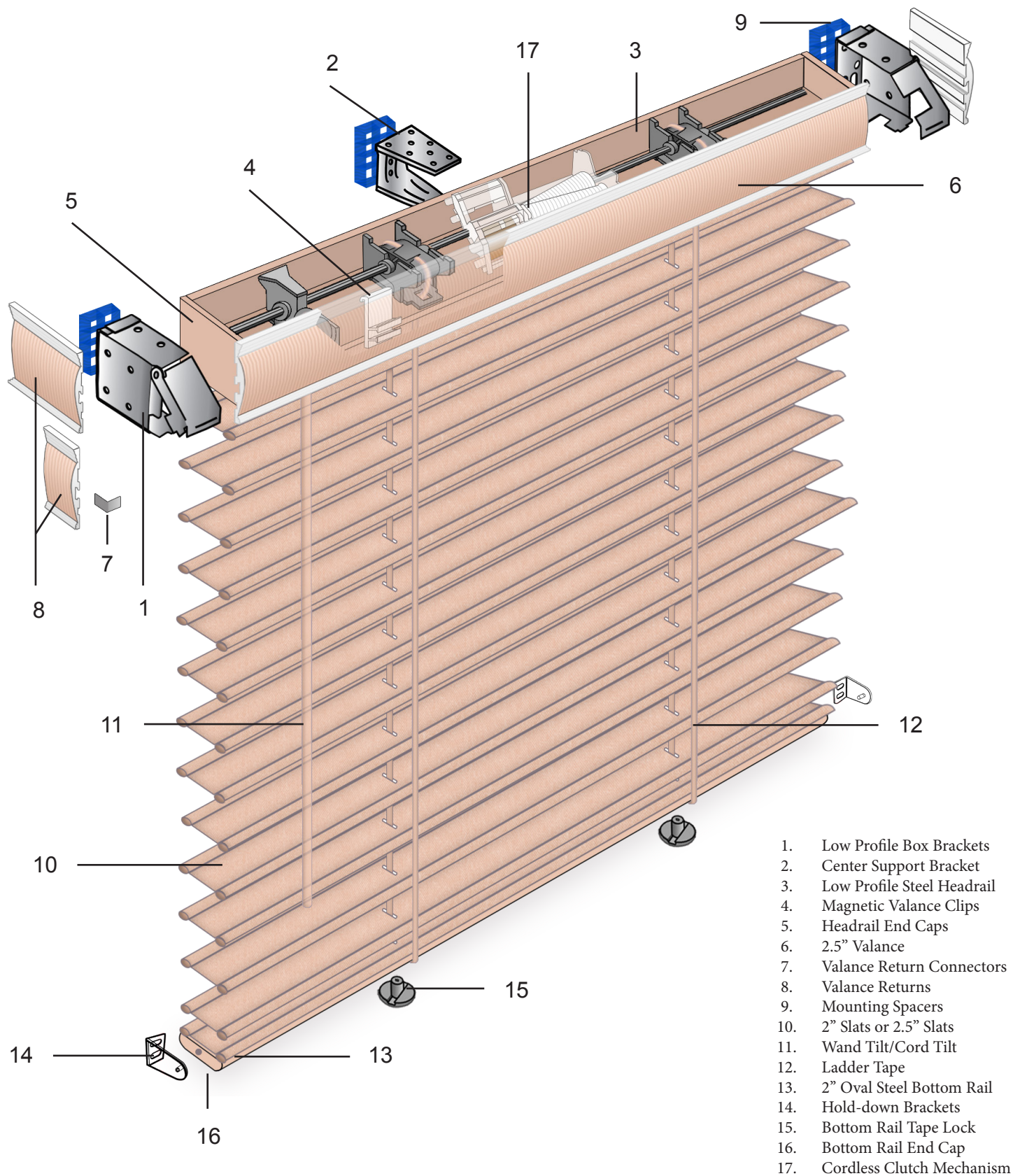
Single Channel

## 2" & 2.5" | STANDARD BLIND



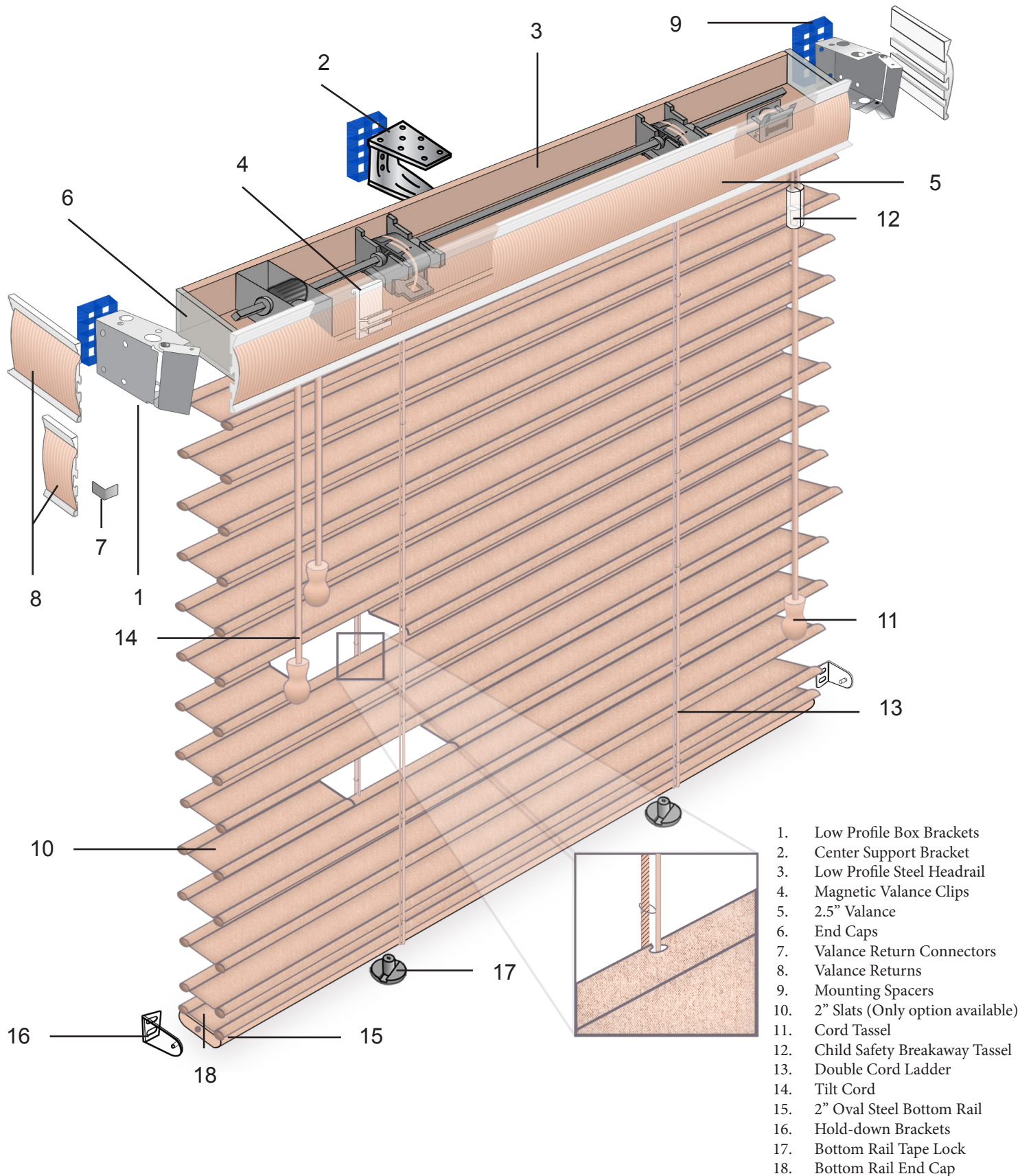


## 2" & 2.5" | CORDLESS BLIND



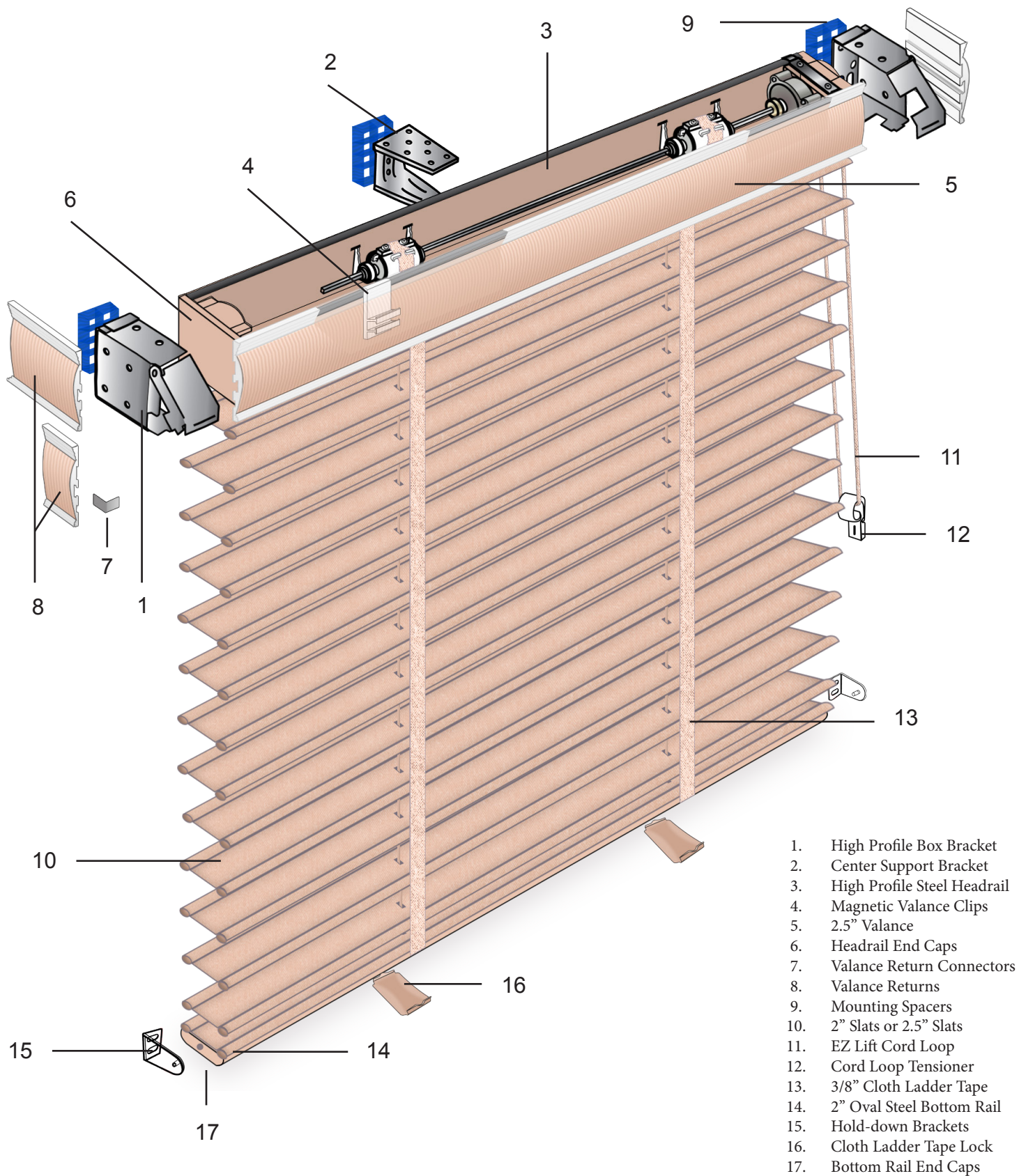


## 2" | AURORA (ROUTELESS) BLIND



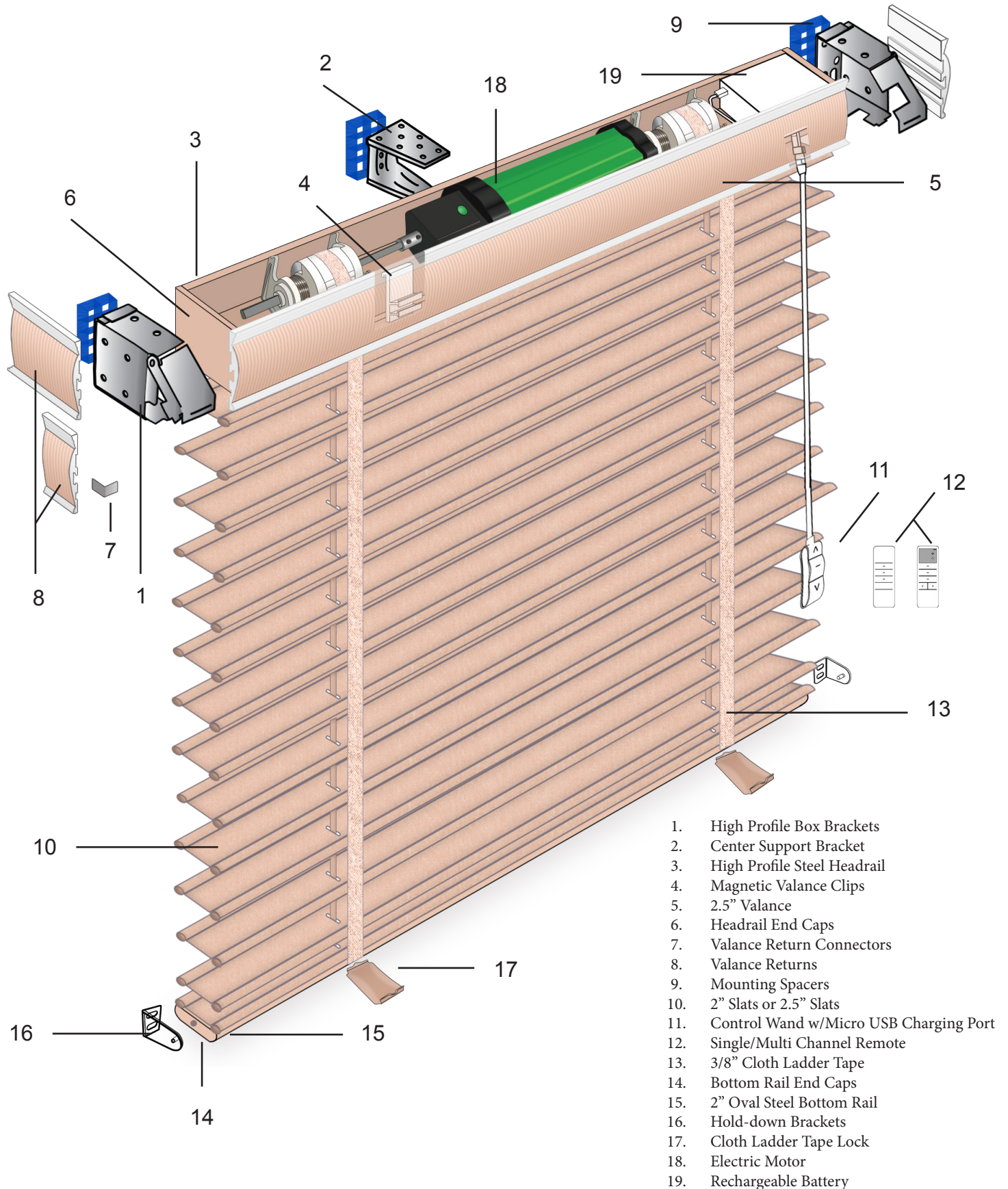


## 2" & 2.5" | E-Z LIFT BLIND





## 2" & 2.5" | MOTORIZED BLIND





# LIGHT FILTERING FABRICS

## 2” Standard Blind

SUGGESTED RETAIL PRICE

NOTE: Cord lengths are based on standards. You have the option of choosing a longer cord.

Height Up To	Width Up To														Cord Length
	24"	32"	36"	42"	48"	54"	60"	66"	72"	78"	84"	90"	96"	107"	
36"	183	212	246	269	292	338	390	430	464	510	527	562	625	813	15"
42"	201	235	275	298	327	378	435	481	527	550	596	630	693	901	15"
48"	218	258	298	327	355	418	481	533	579	607	665	716	779	1013	20"
54"	235	281	327	361	390	458	521	590	653	682	733	785	865	1125	20"
60"	258	298	350	390	424	499	562	636	693	745	802	854	940	1222	20"
66"	281	327	378	418	470	550	613	682	756	808	871	963	997	1296	20"
72"	309	350	401	453	510	596	670	745	814	860	923	997	1083	1408	24"
78"	321	361	413	464	527	613	688	774	865	923	1003	1089	1175	1528	24"
84"	344	384	435	493	562	647	699	831	917	991	1072	1175	1266	1646	24"
90"	367	407	464	527	596	682	745	888	980	1060	1152	1261	1358	1765	24"
96"	384	424	481	550	619	716	791	951	1043	1129	1226	1335	1444	1877	29"
102"	395	447	510	584	659	762	837	1008	1106	1198	1301	1415	1536	1997	29"
108"	418	458	533	613	699	796	882	1072	1175	1272	1381	1496	1627	2115	29"
114"	435	481	562	647	733	842	928	1129	1238	1341	1450	1576	1719	2235	34"
120"	458	510	584	676	768	882	957	1186	1306	1410	1530	1662	1805	2347	48"

Blinds greater than 96" wide incur an additional Net 94.00 charge per box for each order.

## Valances Retail Surcharges

Dover Valance	NO CHARGE														Valance Height 2.75"
Westminster Valance	55	65	75	85	95	105	115	125	135	145	170	195	220	245	Valance Height 3.375"

## Systems Upgrade Retail Surcharges

	Min-Width	Max-Width	Max-Height
Aurora Routeless System: \$100	9.5 inches	107 inches	120 inches
EZ Lift System with Continuous Cord: \$114	9 inches	107 inches	120 inches
Cordless system: \$148	13 inches	107 inches	78 inches
Motorization includes Wand: \$571	29 inches	107 inches	120 inches
Motorization using Remote: \$662			
Single Channel Radio Remote Control: \$120			
Multi-Channels Radio Remote Control: \$150			
USB 6’ Cable with Charger: \$62			
Blinds Under 15” in Width: \$15 NET			

# LIGHT FILTERING FABRICS

## 2.5” Standard Blind

SUGGESTED RETAIL PRICE

NOTE: Cord lengths are based on standards. You have the option of choosing a longer cord.

Height Up To	Width Up To														Cord Length
	24"	32"	36"	42"	48"	54"	60"	66"	72"	78"	84"	90"	96"	107"	
36"	207	247	287	310	333	390	448	494	540	585	608	649	718	933	15"
42"	235	270	316	344	373	436	499	557	608	637	683	729	798	1037	15"
48"	253	298	344	379	413	482	551	614	666	700	763	821	895	1164	20"
54"	276	321	373	413	448	528	597	683	752	786	844	907	999	1299	20"
60"	298	344	402	448	488	574	643	735	798	855	924	987	1079	1403	20"
66"	327	379	431	482	540	631	706	781	872	930	1005	1108	1148	1492	20"
72"	356	402	459	517	585	689	769	855	936	993	1068	1148	1251	1626	24"
78"	367	413	476	534	603	706	792	890	999	1062	1154	1251	1355	1762	24"
84"	396	442	505	568	649	746	809	959	1050	1142	1234	1355	1458	1895	24"
90"	419	471	540	608	689	786	855	1027	1125	1223	1326	1452	1561	2029	24"
96"	442	488	551	637	712	821	907	1091	1205	1303	1412	1533	1665	2165	29"
102"	453	511	585	672	763	878	964	1165	1269	1383	1498	1624	1768	2298	29"
108"	482	528	614	706	804	918	1016	1234	1355	1464	1590	1722	1871	2432	29"
114"	505	551	649	746	844	970	1073	1303	1424	1544	1670	1814	1980	2574	34"
120"	528	585	672	781	884	1016	1102	1366	1504	1624	1762	1917	2078	2701	48"

Blinds greater than 96" wide incur an additional Net 94.00 charge per box for each order.

## Valances Retail Surcharges

Dover Valance	NO CHARGE														Valance Height 2.75"
Westminster Valance	55	65	75	85	95	105	115	125	135	145	170	195	220	245	Valance Height 3.375"

## Systems Upgrade Retail Surcharges

	Min-Width	Max-Width	Max-Height
Aurora Routeless System: Not Available	9.5 inches	107 inches	120 inches
EZ Lift System with Continuous Cord: \$114	9 inches	107 inches	120 inches
Cordless system: \$148	13 inches	107 inches	78 inches
Motorization includes Wand: \$571	29 inches	107 inches	120 inches
Motorization using Remote: \$662			
Single Channel Radio Remote Control: \$120			
Multi-Channels Radio Remote Control: \$150			
USB 6' Cable with Charger: \$62			
Blinds Under 15" in Width: \$15 NET			



# ROOM DARKENING FABRICS

## 2” Standard Blind

SUGGESTED RETAIL PRICE

NOTE: Cord lengths are based on standards. You have the option of choosing a longer cord.

Height Up To	Width Up To														Cord Length
	24"	32"	36"	42"	48"	54"	60"	66"	72"	78"	84"	90"	96"	107"	
36"	201	235	276	298	321	373	431	471	517	563	580	620	689	896	15"
42"	224	258	298	327	362	419	482	534	585	608	654	695	758	985	15"
48"	241	281	327	362	396	459	528	591	637	672	735	786	855	1112	20"
54"	264	310	356	396	431	505	574	654	718	752	809	867	953	1239	20"
60"	287	333	385	425	465	551	620	700	758	821	884	941	1033	1343	20"
66"	310	362	413	459	517	603	677	752	832	890	959	1062	1096	1425	20"
72"	344	385	442	494	563	660	735	821	895	947	1022	1096	1194	1552	24"
78"	356	396	453	511	580	672	758	855	953	1016	1102	1200	1297	1686	24"
84"	379	425	482	545	620	712	775	918	1010	1091	1182	1292	1395	1814	24"
90"	402	448	517	580	660	752	821	982	1079	1171	1269	1389	1492	1940	24"
96"	425	465	528	608	683	786	867	1045	1154	1246	1349	1469	1596	2075	29"
102"	436	494	563	643	729	838	924	1114	1217	1320	1435	1556	1693	2201	29"
108"	459	505	585	677	769	878	970	1182	1292	1401	1515	1647	1791	2328	29"
114"	482	528	620	718	804	924	1022	1246	1360	1481	1601	1739	1894	2462	34"
120"	505	563	643	746	850	970	1056	1309	1435	1556	1688	1831	1992	2590	48"

Blinds greater than 96" wide incur an additional Net 94.00 charge per box for each order.

## Valances Retail Surcharges

Dover Valance	NO CHARGE														Valance Height 2.75"
Westminster Valance	55	65	75	85	95	105	115	125	135	145	170	195	220	245	Valance Height 3.375"

## Systems Upgrade Retail Surcharges

	Min-Width	Max-Width	Max-Height
Aurora Routeless System: \$100	9.5 inches	107 inches	120 inches
EZ Lift System with Continuous Cord: \$114	9 inches	107 inches	120 inches
Cordless system: \$148	13 inches	107 inches	78 inches
Motorization includes Wand: \$571	29 inches	107 inches	120 inches
Motorization using Remote: \$662			
Single Channel Radio Remote Control: \$120			
Multi-Channels Radio Remote Control: \$150			
USB 6’ Cable with Charger: \$62			
Blinds Under 15” in Width: \$15 NET			

# ROOM DARKENING FABRICS

## 2.5" Standard Blind

SUGGESTED RETAIL PRICE

NOTE: Cord lengths are based on standards. You have the option of choosing a longer cord.

Height Up To	Width Up To														Cord Length
	24"	32"	36"	42"	48"	54"	60"	66"	72"	78"	84"	90"	96"	107"	
36"	238	284	330	357	383	449	515	568	621	673	699	746	826	1074	15"
42"	270	311	363	396	429	501	574	641	699	733	785	838	918	1193	15"
48"	291	343	396	436	475	554	634	706	766	805	877	944	1029	1338	20"
54"	317	369	429	475	515	607	687	785	865	904	971	1043	1149	1494	20"
60"	343	396	462	515	561	660	739	845	918	983	1063	1135	1241	1613	20"
66"	376	436	496	554	621	726	812	898	1003	1070	1156	1274	1320	1716	20"
72"	409	462	528	595	673	792	884	983	1076	1142	1228	1320	1439	1871	24"
78"	422	475	547	614	693	812	911	1024	1149	1221	1327	1439	1558	2025	24"
84"	455	508	581	653	746	858	930	1103	1208	1313	1419	1558	1677	2180	24"
90"	482	542	621	699	792	904	983	1181	1294	1406	1525	1670	1795	2334	24"
96"	508	561	634	733	819	944	1043	1255	1386	1498	1624	1763	1915	2490	29"
102"	521	588	673	773	877	1010	1109	1340	1459	1590	1723	1868	2033	2643	29"
108"	554	607	706	812	925	1056	1168	1419	1558	1684	1829	1980	2152	2798	29"
114"	581	634	746	858	971	1116	1234	1498	1638	1776	1921	2086	2277	2960	34"
120"	607	673	773	898	1017	1168	1267	1571	1730	1868	2026	2205	2390	3107	48"

Blinds greater than 96" wide incur an additional Net 94.00 charge per box for each order.

## Valances Retail Surcharges

Dover Valance	NO CHARGE														Valance Height 2.75"
Westminster Valance	55	65	75	85	95	105	115	125	135	145	170	195	220	245	Valance Height 3.375"

## Systems Upgrade Retail Surcharges

	Min-Width	Max-Width	Max-Height
Aurora Routeless System: Not Available	9.5 inches	107 inches	120 inches
EZ Lift System with Continuous Cord: \$114	9 inches	107 inches	120 inches
Cordless system: \$148	13 inches	107 inches	78 inches
Motorization includes Wand: \$571	29 inches	107 inches	120 inches
Motorization using Remote: \$662			
Single Channel Radio Remote Control: \$120			
Multi-Channels Radio Remote Control: \$150			
USB 6' Cable with Charger: \$62			
Blinds Under 15" in Width: \$15 NET			



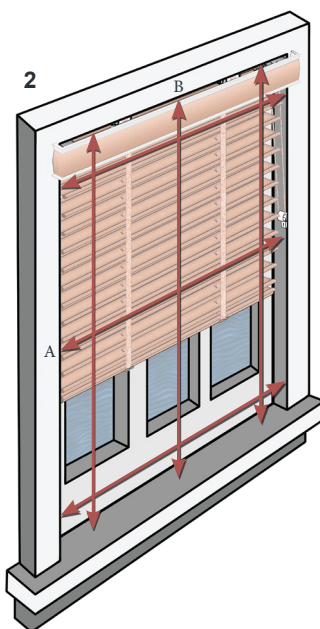
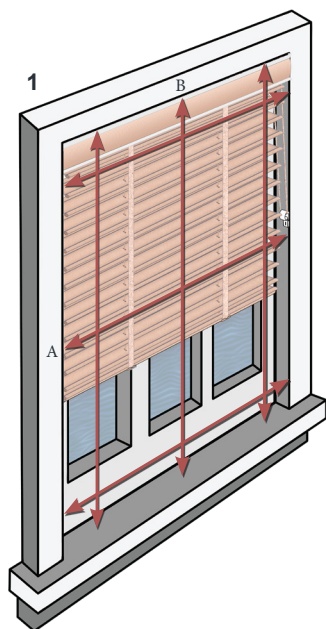
# MEASURING

## Standard Rectangular Windows

### Inside Mount (IB)

Measure exact width A and length B of the window opening as shown. The factory will deduct the necessary allowance off of the blind for clearance. Please mark (IB) as the inside mount. On all inside mounts, a small light gap may appear.

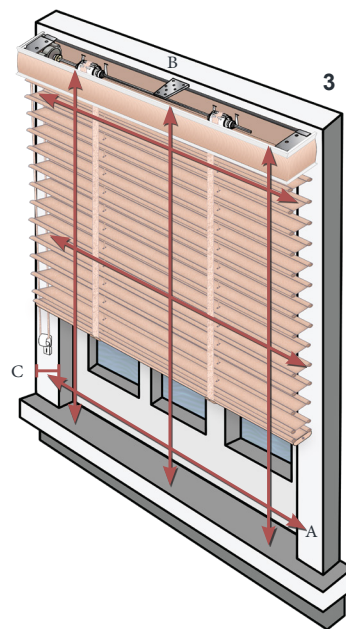
1. IB Mount with IB Valance
2. IB Mount with OB Valance



### Outside Mount (OB)

Measure exact width A and length B of the window opening you wish to cover. The blind should cover the window opening by at least 2 inches on both the width and length or to cover the sill C. Please mark (OB) as the outside mount.

3. OB Mount with OB Valance

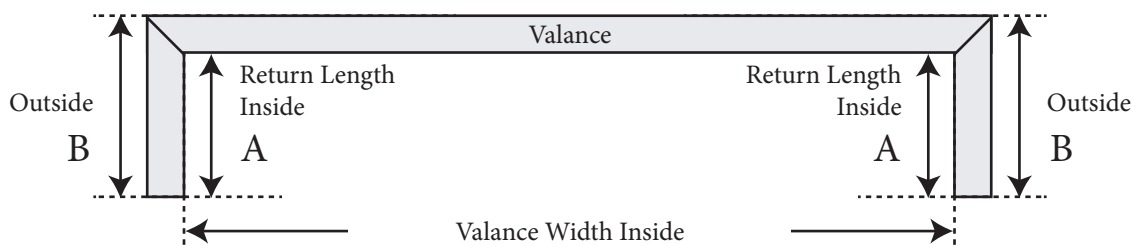


A valance is supplied with your order in one of the following styles, depending on how your blind will be mounted. For a more custom look, the valance and returns may be special ordered to confirm your measurements.

**NOTE:** Valances with returns are measured and cut from the INSIDE of the miter to ensure the most accurate fit when installed over the headrail or window frame.

**Blinds ordered as an OUTSIDE MOUNT will be supplied with returns** sized to cover the end of the blind back to the mounting surface. If projection brackets are requested when the blind is ordered, longer returns will be sent automatically. Outside mount blinds are available without returns upon request. Standard return depth is 2¾”.

Top View - Outside Mount



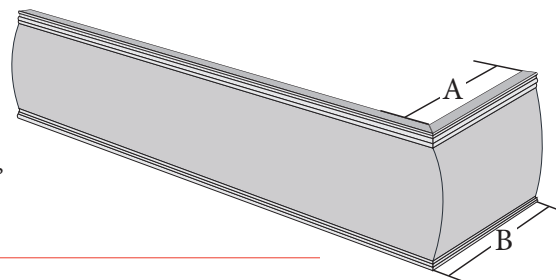
# MEASURING

## Valance Return Measuring and Ordering

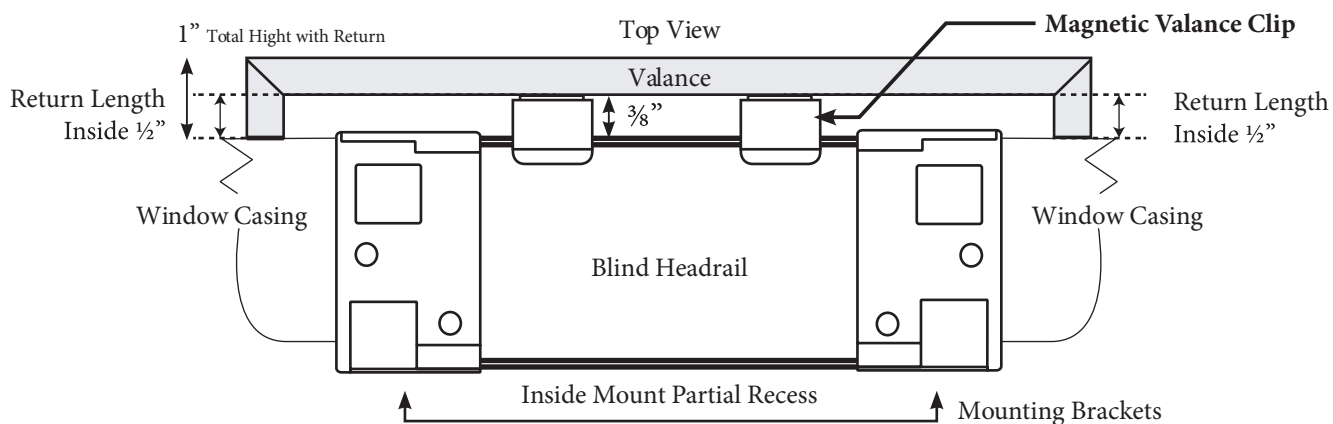
Blind Ordered as an **OUTSIDE MOUNT** with returns

**A: Inside Return Measurements** - 2 ¾" Standard

**B: Outside Return Measurements** - Include return measurement + ½" = 3 ¼"



Blind Ordered as an **INSIDE MOUNT** with **OB Valance** will be supplied with ½" returns with cord tilt, ¾" returns with Wand tilt or 2.5" slat sizes.



### Ordering Information:

Please state at the time of order if the valance and return measurement are for the **EXACT** size required so that no additions or deductions are made.

Different return sizes can be ordered for the same valance. Always provide **LEFT** return **INSIDE** measurements first when ordering.

- **Valance Returns** will have an adhesive strip to ensure a flush seam with the headrail Valance. All standard valance returns come with an "L" clip to support and hold a 90° angle of the Valance Return.
- **Bay and Corner Blind** – must specify return length on inside mount at the time of order.

### Valance and Return Specifications

**Custom Valance Widths** are available upon request. Maximum widths for valance are as follows:

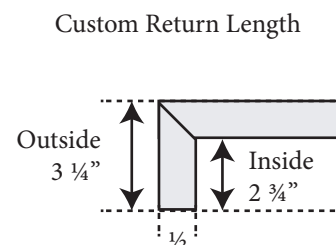
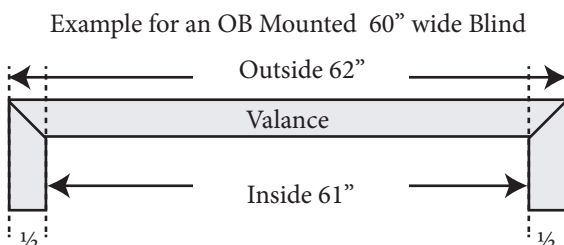
- The maximum continuous width is 110"
- Valance Width greater than 110" will be spliced into 2 sections.

**Custom Return Lengths** are available upon request.

- The minimum return length is ½"
- The maximum return length is 6"
- Add ½" to the valance for a comfortable fit

- 3 ¼" Return Lengths** are factory adjusted when extension brackets or (1 set of) spacer blocks are ordered.
- Short Extension Brackets = 4 ½"
  - Small Spacer Blocks (1st Set) = 3 ¼"
  - Long Extension Brackets = 6 ½"
  - Large Spacer Blocks (1st Set) = 3 ¾"

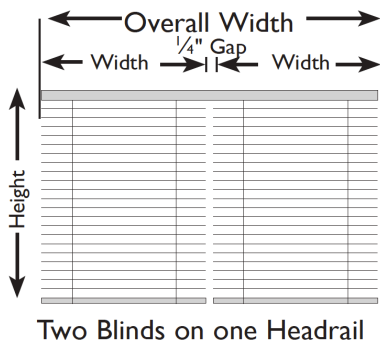
**NOTE:** Valances are cut to measure from the **inside** miter to ensure the most accurate fit when installed over the headrail or window frame.



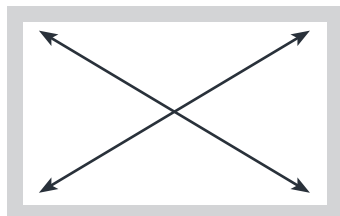


# MEASURING

## Multiple Blinds on One Headrail



Squareness:



Check for squareness, measure diagonal as shown. If the measurement differs over 1/2" your window isn't square. Outside mount is recommended.

Two blinds can be installed on a single headrail to provide a practical treatment for larger windows or sliding patio doors.

**Options: Standard Controls**

2 Blinds on One Headrail	Left Panel	Controls Left Blind
	Right Panel	Controls Right Blind

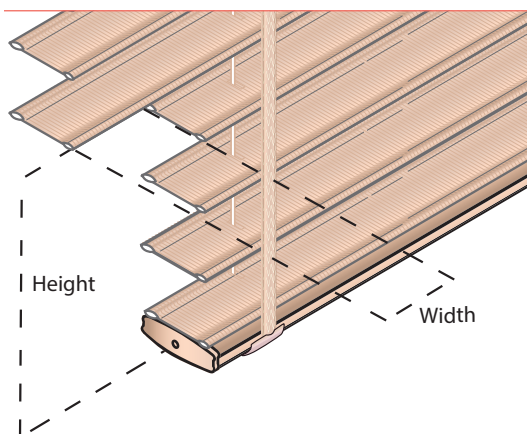
**Measuring:**

1. Measure overall width of the area to be covered. If space permits, an overlap of 1 1/2" per side is recommended for outside mounts.
2. Measure the width of the area each blind is to cover. Measure and specify the left blind first, continuing to the right. Allow a minimum of 1/4" between blinds for operating clearance.
3. Total width of all blinds, plus clearance(s) must equal overall width.
4. Measure height as follows:
  - a. For windows, use standard inside or outside measuring procedures.
  - b. For patio doors, measure height within 3/4" of floor, either from ceiling or a point at least 6 1/2" above the door frame.

**Ordering:**

1. Specify the total width of the headrail.
2. Indicate each panel width separately, specify left blind first, continuing to the right.
3. Specify control positions, if other than standard.
4. Add applicable surcharge

## Cut-Out Blinds



**Additional charge**

- Maximum cut-out is 1" before route hole or notch (corner and side cut-outs only).
- Cut-Outs are measured with the slats tilted in the closed position for maximum clearance.
- The cut-out height may be larger than requested due to slat placement.
- Measure height from the bottom of the blind up to the desired location of the cut-out.

# THE IMPORTANCE OF ORDERING CORRECTLY FROM THE MANUFACTURER

Placing your order correctly with the manufacturer can decrease the need for REMAKES, REFUNDS & RETURNS.

Please contact your dealer.

Because our blinds are custom made, in order to return a blind, you must obtain a Return Goods Authorization (RGA). To obtain authorization for a return, please contact your dealer. We are not responsible for any returns without the RGA number.

## Important Ordering Information:

- You must include ACCURATE measurements for the width and height (to the nearest 1/8") of the product
- You must specify IB or OB mounting required of the product
- You must include the color name, and color number
- You must include Position Control - RIGHT or LEFT

## Fabric Style & Color Selection:

Fabrics come in Light Filtering and Room Darkening. Choose from the collection. (Page 12,13)

Example Color Number: **50 100 D**

Fabric Size • 2" – **50**  
• 2.5" – 65

Color # • White – **100**

Collection • Darkening – **D**

## To Find Your Cost:

Height Up To	Width Up To					
	24"	32"	36"	42"	48"	54"
36"	184	208	235	251	266	302
42"	200	224	253	272	291	333
48"	211	241	271	294	314	362
54"	227	259	290	318	341	391
60"	243	274	310	<b>338</b>	367	423
66"	260	295	330	362	401	460
72"	281	310	348	385	431	495

Please contact your dealer for a consultation on products and pricing options.

REMAKES: We understand mistakes happen and typically your pre-negotiated Oops discount may apply.

REFUNDS: Refunds may be issued at the manufactures discretion.

RETURNS: Dealer must contact the manufacturer directly to obtain a return authorization.



# ORDER FORM

Please make sure the information provided is CORRECT.

**NOTE:** IB: The factory will deduct 1/2" off the total width. OB: The factory will make the product to the exact measurements provided.

PLEASE EMAIL TO: [CustomerService@LantexUSA.com](mailto:CustomerService@LantexUSA.com)

BILL TO:	SHIP TO:	SAME AS BILL TO <input type="checkbox"/>
Company: _____	Company: _____	
Street: _____	Street: _____	
City: _____ State: _____ Zip: _____	City: _____ State: _____ Zip: _____	
Country: _____	Country: _____	
Telephone: _____ Fax: _____	Telephone: _____ Fax: _____	

P.O. NUMBER: \_\_\_\_\_



To order this product please contact Customer Service at [CustomerService@lantexusa.com](mailto:CustomerService@lantexusa.com) or call at (302) 294-6552

## SIDE MARK:

1	Qty.	IB/OB	Width	Height	2"		2.5"		Color #	Color Name	Tilt L/R	Lift L/R
					Cordless		Cordless					
					EZ Lift		EZ Lift					
					Aurora (Routeless)		EZ Lift					
					Standard		Standard					
PVC Valance				Room Name:				Special Note:				
Westminster Valance				Window Name:								

2	Qty.	IB/OB	Width	Height	2"		2.5"		Color #	Color Name	Tilt L/R	Lift L/R
					Cordless		Cordless					
					EZ Lift		EZ Lift					
					Aurora (Routeless)		EZ Lift					
					Standard		Standard					
PVC Valance				Room Name:				Special Note:				
Westminster Valance				Window Name:								

3	Qty.	IB/OB	Width	Height	2"		2.5"		Color #	Color Name	Tilt L/R	Lift L/R
					Cordless		Cordless					
					EZ Lift		EZ Lift					
					Aurora (Routeless)		EZ Lift					
					Standard		Standard					
PVC Valance				Room Name:				Special Note:				
Westminster Valance				Window Name:								

4	Qty.	IB/OB	Width	Height	2"		2.5"		Color #	Color Name	Tilt L/R	Lift L/R
					Cordless		Cordless					
					EZ Lift		EZ Lift					
					Aurora (Routeless)		EZ Lift					
					Standard		Standard					
PVC Valance				Room Name:				Special Note:				
Westminster Valance				Window Name:								

5	Qty.	IB/OB	Width	Height	2"		2.5"		Color #	Color Name	Tilt L/R	Lift L/R
					Cordless		Cordless					
					EZ Lift		EZ Lift					
					Aurora (Routeless)		EZ Lift					
					Standard		Standard					
PVC Valance				Room Name:				Special Note:				
Westminster Valance				Window Name:								

# ORDER FORM

Please make sure the information provided is CORRECT.

**NOTE:** IB: The factory will deduct 1/2" off the total width. OB: The factory will make the product to the exact measurements provided.

PLEASE EMAIL TO: [CustomerService@LantexUSA.com](mailto:CustomerService@LantexUSA.com)

BILL TO:	SHIP TO:	SAME AS BILL TO <input type="checkbox"/>
Company: _____	Company: _____	
Street: _____	Street: _____	
City: _____ State: _____ Zip: _____	City: _____ State: _____ Zip: _____	
Country: _____	Country: _____	
Telephone: _____ Fax: _____	Telephone: _____ Fax: _____	

P.O. NUMBER: \_\_\_\_\_



To order this product please contact Customer Service at [CustomerService@lantexusa.com](mailto:CustomerService@lantexusa.com) or call at (302) 294-6552

## SIDE MARK:

1	Qty.	IB/OB	Width	Height	2"		2.5"		Color #	Color Name	Tilt L/R	Lift L/R
					Cordless		Cordless					
					EZ Lift		EZ Lift					
					Aurora (Routeless)		EZ Lift					
					Standard		Standard					
PVC Valance				Room Name:				Special Note:				
Westminster Valance				Window Name:								

2	Qty.	IB/OB	Width	Height	2"		2.5"		Color #	Color Name	Tilt L/R	Lift L/R
					Cordless		Cordless					
					EZ Lift		EZ Lift					
					Aurora (Routeless)		EZ Lift					
					Standard		Standard					
PVC Valance				Room Name:				Special Note:				
Westminster Valance				Window Name:								

3	Qty.	IB/OB	Width	Height	2"		2.5"		Color #	Color Name	Tilt L/R	Lift L/R
					Cordless		Cordless					
					EZ Lift		EZ Lift					
					Aurora (Routeless)		EZ Lift					
					Standard		Standard					
PVC Valance				Room Name:				Special Note:				
Westminster Valance				Window Name:								

4	Qty.	IB/OB	Width	Height	2"		2.5"		Color #	Color Name	Tilt L/R	Lift L/R
					Cordless		Cordless					
					EZ Lift		EZ Lift					
					Aurora (Routeless)		EZ Lift					
					Standard		Standard					
PVC Valance				Room Name:				Special Note:				
Westminster Valance				Window Name:								

5	Qty.	IB/OB	Width	Height	2"		2.5"		Color #	Color Name	Tilt L/R	Lift L/R
					Cordless		Cordless					
					EZ Lift		EZ Lift					
					Aurora (Routeless)		EZ Lift					
					Standard		Standard					
PVC Valance				Room Name:				Special Note:				
Westminster Valance				Window Name:								



# MANUFACTURER'S TERMS AND CONDITIONS

- Catalog prices (USD) and product specifications are subject to change without notice.
- Most terms are 30 days from shipment unless otherwise stated.
- A 1.5% per month service charge will be applied to all past due balances.
- All materials are subject to dye lot variations.
- Manufacturer will not assume responsibility for any color mismatch after subsequent orders.
- There is a \$40.00 charge for any returned checks.
- For any product the manufacturer performs warranty service on, transportation charges are not included in warranty.
- State Tax Exemption Certificates must be provided and on file for tax exempt sales production.
- There will be a 30% service charge for changes or cancellations made after production has started.
- Orders placed after 5:00 p.m. EST will be processed the following business day.
- The manufacturer is not responsible for printing or typographical errors within the catalogs, websites or other published information.
- Manufacturer currently ships with most major carriers.
- Following the WCMA National Safety Standards, all cords will be made 40% of the length of the product. The manufacturer suggests all cords to be permanently anchored to keep children and pets safe.
- Returns must have an RGA Number and be approved.
- Claims for merchandise shortages, damages or discrepancy must be made within 10 days of the receipt of goods.
- These Fabric Blinds are custom made and cannot be canceled once the order has been put into production.
- Manufacturer is not responsible for any misrepresentation by a dealer.
- Balances on open invoices are stated in US funds and should be paid in US funds.

# WARRANTY

This Limited Lifetime Warranty program is available to consumers who have purchased blinds and shades by (The Manufacturer). This applies to Fabric Horizontal Blinds, Sheer Shades, Roman Shades, Cellular Shades, Pleated Shades, and painted or stained valances. This warranty is effective February 1st, 2021. Product bought prior to effective date will be subject to warranty in place at time of original purchase.

## **What the Warranty Covers**

The manufactured product is warranted against original defects in materials, workmanship or failure to operate for as long as the **original** purchaser owns the product (unless shorter time periods are provided below) on the conditions that;

- The product was properly installed in a residential or commercial dwelling
- The product was made or assembled exclusively from Lantex USA, LLC. materials and components
- The Manufacturer recommendations were followed regarding limitations and specifications
- The Manufacturer componentry are covered for 5 years
- The Manufacturer motorized components are covered for 2 years

## **Who is Covered**

This warranty extends only the ORIGINAL purchaser of the above stated products.

The Manufacturer obligations to the Consumer are limited to the repair or replacement of parts or products found to be defective. The Manufacturer is not responsible for shipping charges or labor costs, for measuring and taking the product down or for remeasuring or reinstalling the product. Defects in product found on arrival must be reported within 10 days of delivery date confirmed by the shipping company. If not the product will be remade at full cost to the consumer.

If repairs are made under this warranty, the repairs will be made with like or similar parts.

## **TO RECEIVE WARRANTY SERVICE, PLEASE:**

1. Contact our Customer Service department at 1.302.294.6552 and advise them of the nature of the issue. Customer Service will provide you with information as to how to proceed.
2. Please remember, product returned for warranty claims must be accompanied by the original sales receipt as well as written details regarding the nature of the problem, location of the product, etc.
3. All remake requests will need a picture or video supporting the claim before being approved.
4. If your product is returned, please retain a copy of the shipping information for your records.

## **What the Warranty Does Not Cover**

This warranty does not cover conditions or damages caused by abuse, accidents, alterations, misuse, or failure to follow instructions for measurement, installation, use, cleaning, or maintenance. Normal wear and tear, including but not limited to the items or occurrences below, is not covered by the warranty:

- Batteries.
- Unfinished cornices.
- All fabrics can lose original intensity after long exposure to the sun. When left for extended periods in direct sunlight, plastics tend to yellow or crack. Some loss of color intensity or discoloration may occur in plastic materials or wood finishes.
- Colors may vary from lot to lot and may not exactly match samples of previous purchases.
- All cords will eventually wear out.

THE MANUFACTURER CONSIDERS THESE ITEMS OR OCCURRENCES NORMAL WEAR AND TEAR, AND THEY ARE NOT COVERED BY THIS WARRANTY. THIS WARRANTY IS EXCLUSIVE AND IN LIEU OF ALL OTHER WRITTEN OR ORAL WARRANTIES OR OBLIGATIONS AND LIABILITIES. NO PERSON IS AUTHORIZED TO EXTEND OR ALTER THIS WARRANTY. THE MANUFACTURER SHALL HAVE NO LIABILITY WHATSOEVER FOR INCIDENTAL OR CONSEQUENTIAL DAMAGES. SOME STATES DO NOT ALLOW THE EXCLUSION OR LIMITATION OF INCIDENTAL OR CONSEQUENTIAL DAMAGES, SO THIS LIMITATION OR EXCLUSION MAY NOT APPLY TO YOU.



# *Fabric Blinds*

HORIZONTAL FABRIC BLINDS



2021

2021\_FB\_CAT\_2021.09